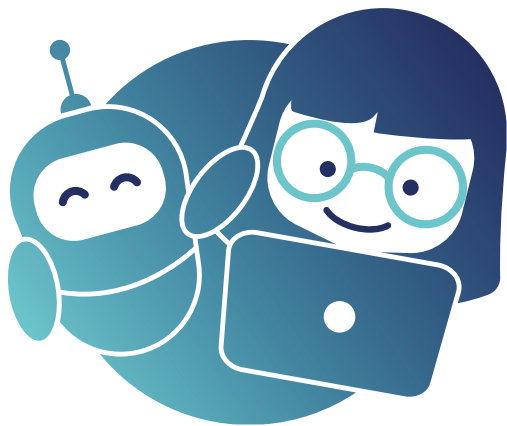


9

I'm not a Robot



Toolbox #9

Can a robot  
be my friend?

## Introduction

### What is this about?

Fundamental questions about the morality and ethics of technologies, robots and AI are addressed in this toolbox. Connections are drawn between the development of human character and human virtues with the use of and interaction with robots. Contrasts between human-human interaction and human-robot interaction will be used to highlight parallels and differences. The activities proposed in the toolbox also contribute to the development of children's social and emotional competences. Moral action and friendship are at the centre of this.

In terms of content, there are references to Toolbox 8: Does a robot have feelings? in which the question of humanising robots is also addressed, and Toolbox 2: Who knows a robot? in which it is clarified that robots are constructed and controlled by humans.

### Children's point of view

In which situations and situations in life can a robot be a friend?  
In which situations could a robot replace a human being?  
And in which situations could it not?

#### Questions from Children

What does the word „friend“ mean?  
What is friendship?  
How can robots help us to develop ourselves?

# 9

## What we know

The development of technologies now allows us to talk about social interaction and communication between humans and robots in roles such as friends, companions and tutors (Neumann, 2020). The concept of social robots has emerged in the last decades.

It is important to note that social robots can help people in various areas of social and everyday life, including but not limited to entertainment, leisure, personal services, cleaning, security and elderly care. Robots are also used in education, especially for learning languages, providing learning experiences and supporting learning in certain subjects such as biology, chemistry or mathematics, but the attitude of teachers and parents towards robotics in early childhood is more negative than positive.



Source [Unsplash.com](https://unsplash.com/photos/8v3v3v3v3v) | Andy Kelly

## Goals

# Pedagogical professionals

### Morality and ethics

Rise to the challenge of talking about morality and ethics with the children.

### Possible tendency to anthropomorphize robots

Understand that children anthropomorphise robots and therefore also assume that they act morally.

### Robots and AI-based device operations

Can question moral and ethical principles in relation to the action of robots or AU-based devices.

## Children

### Differences between humans and robots

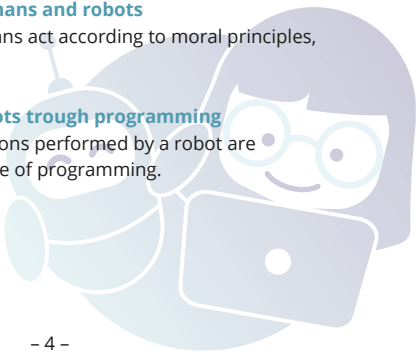
Knowing that humans and robots are different.

### Moral principles: humans and robots

Recognise that humans act according to moral principles, but robots do not

### Operation of the robots trough programming

Understand that actions performed by a robot are only possible because of programming.



# 9

## Exercise

Level

# Robots as pets

### Materials

#### Tablet + Tamagotchi game

(or similar games Axolochi, Pet Dog, Huggy)

### Preparation

Install Tamagotchi game into your tablet (for example Catgotchi or PakkaPets. You are also free to use other similar games.

### Implementation

The children can choose one of the Tamagotchi characters and explain their choice. Try to raise Tamagotchi Pet for a few days. Teacher initiates discussion with children about the pet.

### Reflection

Let's compare this animal with a real one.

How are they similar, how are they different?

How do you take care of him?

Is it fun for you to play with?

Does he cheer you up when you're sad?

Is he a good friend? Why?

A puppy or a kitten can be my best friend.

Can a Tamagotchi be my best friend?

## Exercise

Level

# 9

# Comparison between robot friend and animal friend (1)

### Materials

**Tablet + Tamagotchi game**  
(or similar games Axolochi,  
Pet Dog, Huggy)  
**Chalk**

**Tape** or large piece of paper  
**Scheme**  
**Image Cards**

### Preparation

Play Tamagotchi game. After playing take animals and robots cards and discuss about differences between animals and robots and possible emotions. You are also free to use other similar games.

### Implementation

After playing the Tamagotchi game, let's compare an animal friend with a Tamagotchi friend. Draw 2 diagrams on the floor. In the middle of one scheme put the image of a Tamagotchi robot, in the other an animal. Take the cards with different robots and animals pictures. Put in the scheme which cards match the robot and which match the real animal. Speak with children about emotions, which are related to robots and which are related to animals.

### Reflection

How is a robot similar to an animal? What is the difference between? What feelings does a robot have? What feelings does an animal have? What can the robot do/act? What can the animal do/act? What motivates the robot friend to move, act? What motivates you to move, act to befriend/unfriend an animal?

# 9

## Exercise

Level



Introduction

What we know

Goals

Exercise

# Comparison between robot friend and animal friend (1)

## Materials

**Tablet + Tamagotchi game**

(or similar games Axolochi, Pet Dog, Huggy)

**Chalk**

**Tape** or large piece of paper

**Scheme**

**Image Cards**

## Preparation

Play Tamagotchi game at a higher level. After playing take animals and robots cards and discuss about friendliness and emotions characteristic of friendship. You are also free to use other similar games.

## Implementation

Draw a diagram of similarities and differences on the floor (draw with chalk, use tape or a large piece of paper). In the middle circles put Tamagotchi robot and animal.

Take the cards with animals, robots and animals robots. Arrange which cards match the robot, the animal, and which match both. Let's discuss about friendships with a Tamagotchi robot and an animal or animal robot which friend would children prefer and which could be the best friend. Talk about what characteristics are characteristic of a robot friend and which characteristics of an animal friend.

## Reflection

Can a robot be a friend? What is characteristic/uncharacteristic of a robot as a friend on a computer screen? What is characteristic/uncharacteristic of an animal as a friend? What is typical/uncharacteristic of a robot animal?

# Tips for in-depths study

## Links

### 5 Best Personal Robots You Can Buy In 2023

<https://youtu.be/eTQVZq9UTng>



### Tower Of Power | Preschool Learning Videos | Rob The Robot

<https://youtu.be/xHobleJ1BGw>



### Shelly, a Robot Capable of Restraining Children's Robot Abuse

<https://youtu.be/37jOzS0sK3c>



## Imprint

Toolbox #9 was created in 2022 by Lina Kaminskienė, Ilona Tandzegolskienė-Bielaglovė, Ulrike Stadler-Altman and Susanne Schumacher



Fakultät für Bildungswissenschaften  
Facoltà di Scienze della Formazione  
Facoltà de Scienze della Formazione

Brixen  
Bressanone  
Pergenen



Børneinstitution  
Holluf Pile - Tingkær

KLAX



Co-funded by the  
Erasmus+ Programme  
of the European Union

The European Commission's support for the production of this publication does not constitute an endorsement of the contents which reflect views only of the authors. The commission cannot be held responsible for any use which may be made of the information contained therein.



This work is licensed under Attribution-NonCommercial-ShareAlike 4.0 International:  
<https://creativecommons.org/licenses/by-ncsa/4.0/>

